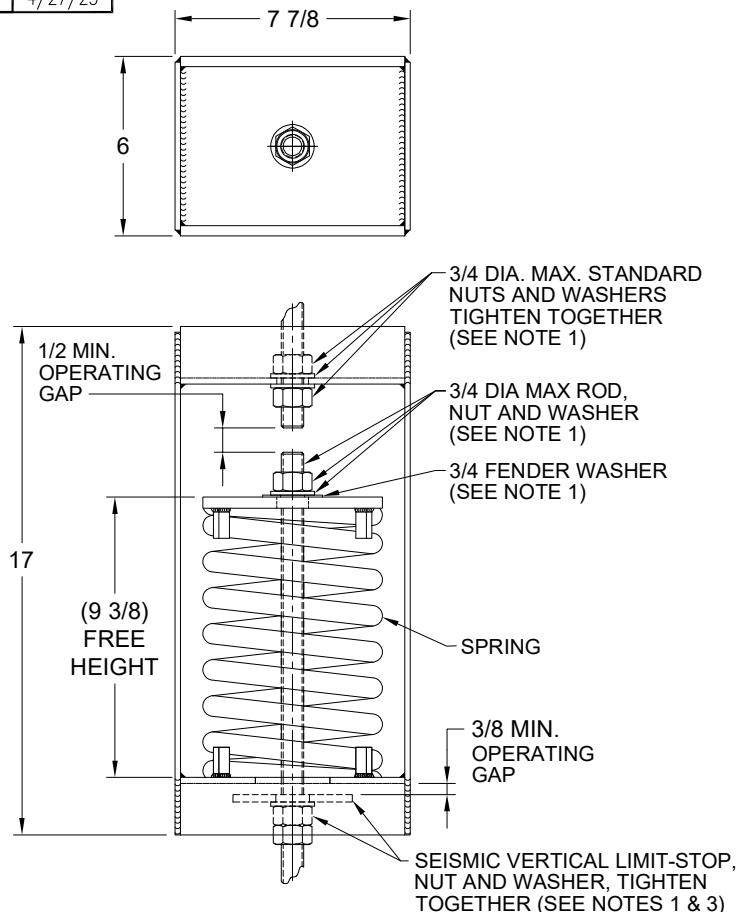


REV.	DESCRIPTION	DATE	BY



## NOTES:

- HANGER RODS, NUTS AND WASHERS, AS SHOWN, NOT BY THE VMC GROUP.
- STANDARD FINISH: HANGER BOX - PAINTED, POWDER COATED OR GALVANIZED STEEL; SPRING - POWDER COAT.
- SEISMIC VERTICAL LIMIT-STOP REQUIRED FOR SEISMIC APPLICATIONS; NOT BY THE VMC GROUP. INSTALL WASHER .25 THK. MIN. X 4 O.D. MIN. WITH REQUIRED INSIDE DIAMETER TO ACCOMMODATE ROD SIZE IN USE. THIS CAN BE ACCOMPLISHED BY USING A SINGLE WASHER OR BY STACKING NOT MORE THAN TWO WASHERS AS SHOWN.
- ALL DIMENSIONS ARE FOR REFERENCE; DIMENSIONS SHOWN AS NOMINAL. INTERPRET PER ANSI Y14.
- ALL SPRINGS ARE DESIGNED WITH MINIMUM 50% OVER-TRAVEL.
- HANGER BOXES ARE AVAILABLE PRE-COMPRESSED UP 50% OF THEIR DESIGNATED MAX. LOADS.
- RATED DEFLECTIONS ARE WITHIN 25% OF NOMINAL. HIGHER DEFLECTIONS ARE ALLOWED IF THEY MEET SPECIFICATIONS.

TYPE HS-4C SPRING HANGERS  
FOR 4" NOMINAL DEFLECTION

HANGER	RATED LOAD (LBS)	DEFLECTION (IN)	SPRING RATE (LB/IN)	SPRING COLOR CODE
HS-4C-65	65	4.64	14	DK BLUE
HS-4C-200	200	4.44	45	BLUE
HS-4C-400	400	4.49	89	MED GRAY
HS-4C-650	650	3.65	178	BLACK
HS-4C-950	950	3.42	278	DK RED
HS-4C-1460	1460	3.28	445	LT IVORY

DOCUMENT SPECIFICATION ACKNOWLEDGMENT  
SIGNATURE CERTIFIES DRAWING HAS BEEN REVIEWED AND APPROVED AS ILLUSTRATED.

APPROVED BY: \_\_\_\_\_ DATE: \_\_\_\_\_

## CUSTOMER ACKNOWLEDGMENTS

ANY REVISION, CHANGE, OR MODIFICATION MADE TO THIS APPROVAL AFTER IT HAS BEEN SIGNED AND APPROVED MAY AFFECT PRODUCT DELIVERY DATE AND/OR COST.

RECEIVED BY: \_\_\_\_\_ DATE: \_\_\_\_\_

①	③	⑤	⑦
②	④	⑥	⑧

## ISOLATOR SELECTIONS

LOC 1:	LOC 2:
LOC 3:	LOC 4:
LOC 5:	LOC 6:
LOC 7:	LOC 8:
CUSTOMER EQPT. TAG:	

NOTE: MATERIAL SHOWN IS FOR (1) SET.

OTHER MATERIALS, COMPOUNDS, OR FINISHES WITH EQUAL OR SUPERIOR PROPERTIES MAY BE SUBSTITUTED AS THEY BECOME AVAILABLE.



## CERTIFIED FOR:

JOB NAME: \_\_\_\_\_

CUSTOMER: \_\_\_\_\_

CUSTOMER P.O.: \_\_\_\_\_

SALES ORDER: \_\_\_\_\_

MODEL HS-4C 65-1460 LBS.  
SPRING HANGERS  
4 INCH NOMINAL DEFLECTION



**VMC**  
GROUP  
"THE POWER OF TOGETHER"  
Bloomington, NJ 07403  
Houston, TX 77041

SCALE:

NONE

SHEET:

1 OF 1

DRAWING NO.:

REVISION

